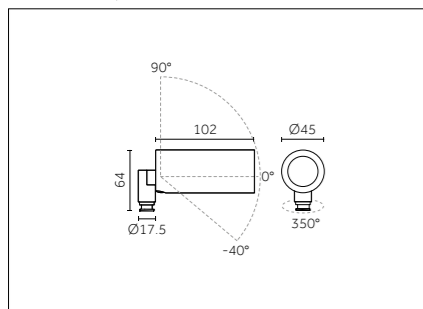
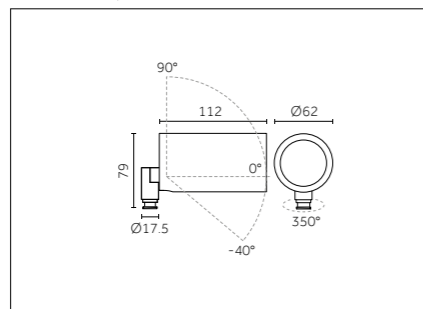


YORI IP66 Ø45

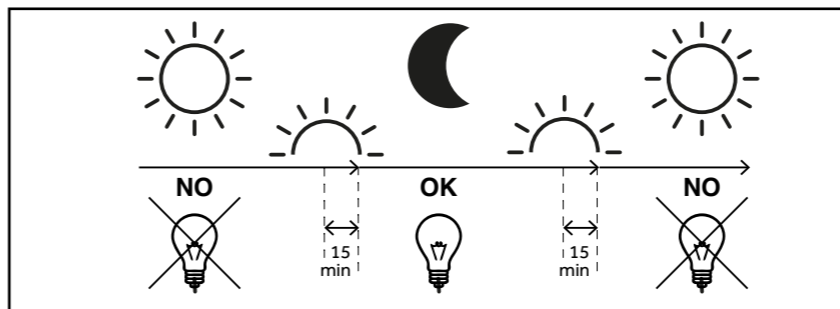


YORI IP66 Ø60



**TO INSTALL THE YORI IP66
SEE ACCESSORY INSTRUCTIONS**

WARNING



IT - Periodo giornaliero di accensione ammesso per temperature ambiente >25°C
 EN - Allowed daily operation period for ambient temperatures >25°C
 FR - Durée quotidienne d'allumage admissible pour des températures ambiantes >25°C
 DE - Erlaubte tägliche einschaltdauer für Umgebungstemperaturen > 25°C
 ES - Periodo diario de encendido permitido para temperaturas ambiente >25 °C
 RU - Ежедневная допустимая продолжительность работы для температуры окружающей среды >25°C

WORKING TEMPERATURE

YORI IP66 Ø45 2 Watt | 3,2 Watt
 Ta Max: -20°C +50°C
YORI IP66 Ø60 4.5 Watt | 7 Watt
 Ta Max: -20°C +50°C
YORI IP66 Ø60 12 Watt
 Ta Max: -20°C +40°C

YORI IP66

www.reggiani.net



Installation Guide

Reggiani

| | | | |
|--|--|--|--|
| <p>Ø45_SNOOT 0.27405.00xx</p> <p>Pdf code: 1.95862.0000</p> | <p>Ø45_SNOOT 45° 0.27404.00xx</p> | <p>Ø60_SNOOT 0.27407.00xx</p> | <p>Ø60_SNOOT 45° 0.27406.00xx</p> |
|--|--|--|--|

| | | | |
|--|---|---|--|
| <p>STAKES 350 mm: 0.27411.00 500 mm: 0.27412.00 1000 mm: 0.27413.00</p> <p>Pdf code: 1.95863.0000</p> | <p>POLES 350 mm: 0.27420.00 500 mm: 0.27421.00 1000 mm: 0.27422.00</p> <p>Pdf code: 1.95861.0000</p> | <p>ANTIROTATION STAKE 0.27414.0000</p> <p>Pdf code: 1.95856.0000</p> | <p>DOUBLE HEAD FOR STAKE 0.27402.00xx</p> <p>Pdf code: 1.95860.0000</p> |
|--|---|---|--|

WARNING

PRODUCT'S STABILITY IS SUBJECT TO THE TYPE OF GROUND IN WHICH IT IS INSTALLED

The installer is in charge of evaluating the adequate burial depth according to the existing/available soil, in order to obtain stability and safety of the product.

- Very compact ground (soil): bury the pole at least 20 cm.
- Non compact ground (soil): compact as much as possible and bury the pole at least 40cm.
- Greedy/stony ground: evaluate correct depth of burial in order to obtain adequate product stability and safety.
- Concrete base: drown pole 20cm.

| | | | | |
|---|---|---|---|---|
| <p>BASE WITH REAR CABLE ENTRY 0.27410.00xx</p> <p>Pdf code: 1.95857.0000</p> | <p>BASE WITH SIDE CABLE ENTRY 0.27415.00xx</p> <p>Pdf code: 1.95858.0000</p> | <p>BEAM CLAMP 0.27403.00xx</p> <p>Pdf code: 1.95859.0000</p> | <p>TREE STRAP WITH SIDE CABLE ENTRY 0.27417.00xx</p> <p>Pdf code: 1.95864.0000</p> | <p>TUBE CLAMP 0.27401.00xx</p> <p>Pdf code: 1.95865.0000</p> |
|---|---|---|---|---|

